



Algas-SDI
Origins in 1932

ISO 9001
Certified

Torrexx™

Dry Electric LP-Gas Vaporizer

Indirect Heated FM Marked



algas-sdi.com

Torrexx™ is a heavy-duty, fast acting LP-Gas vaporizer which provides reliable and efficient process performance for commercial, municipal and industrial applications worldwide. Its aluminum construction and compact footprint make it light weight and easy to move and install!

KEY POINTS:

Hermetic Relay

(high-capacity models 240Kg/h–320Kg/h)

Heavy-duty contactor

(low-capacity models 25Kg/h–160Kg/h)

98% thermal efficiency

Corrosion-free

Simple and compact

No water-glycol

Liqui-SAFE™ Valve

Auto-restart after power interruption

Easily fits inside cabinet



TX100 shown

Since our first dry electric vaporizer patent in 1972, **Algas-SDI** has shipped tens of thousands of units to 90 countries on six continents.

Torrexx defines the industrial standard for dry electric LPG vaporizers. Heater control is through the use of a robust contactor or hermetic relay (depending on the model). In the event of a “high liquid level occurrence,” our proprietary **Liqui-Safe Valve™** prevents liquid LPG from passing downstream of the vaporizer. The valve provides visual indication of activation. This allows easy troubleshooting and assures the end-user the device is functioning properly.

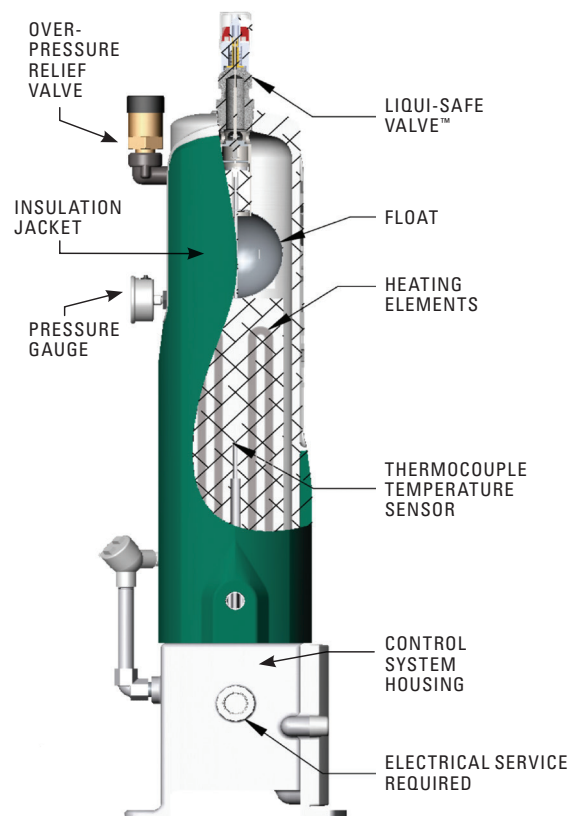
Operational Characteristics

Torrex is a robust, yet simple, LPG electric vaporizer. No start/stop switches are used. When power is applied, the vaporizer is ON and ready for operation within seconds!

Heating elements are cast "in-situ" in the aluminum core. Two thermocouples housed in a common sheath directly control normal operation and provide over-temperature protection. Operational set-points are factory set.

Fusible links installed in the Control System Housing provide additional over-temperature protection.

Torrex is available in all common voltages. Explosion proof design meets Class I, Division 1, Group D (per NFPA Pamphlet 70). Hazardous area classification allows **Torrex** to be installed adjacent to a tank or building with no minimum separation requirements.



IDEALLY SUITED FOR:



Schools



Hospitals



Backup
Generators



Temporary Heat

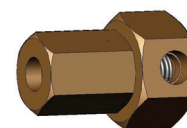


Industrial

START-UP: Less than 1 minute

algas-sdi.com

Vaporization Type		Indirect dry electric														
Electrical Data	MODEL		TX25		TX50		TX100		TX160		TX240		TX320			
	VOLTAGE	PHASE	KW	AMPS	KW	AMPS	KW	AMPS	KW	AMPS	KW	AMPS	KW	AMPS		
	120	1	3.9	32.8	5.9	28.5	11.8	56.9	16.4	45.5						
	208	3	3.0	14.2		16.4		32.8								
	220	1	3.3	15.0	6.6	30.1	13.2	60.2	18.3	48.1						
		3				17.4		34.7								
	240	1	3.9	16.4	7.9	32.8	13.1	54.7	21.8	52.5						
		3				19.0		37.8								
	380	3				6.6	10.0	13.2	20.0	18.3	27.8	25.4	38.6	38.6	58.7	
	400	3				7.3	10.6	14.6	21.1	20.3	29.3	28.1	40.6	37.0	53.4	
	415	3				7.8	10.9	15.7	21.9	21.8	30.3	30.3	42.1	39.8	55.4	
	440	3						13.2	17.4	18.3	24.0	25.5	33.4	38.7	50.8	
	480	3						15.8	19.0	21.8	26.2	30.3	36.4	39.9	48.0	
	575	3													39.7	39.9
	Electrical Class	Hazardous Area Classification — Class I, Division 1, Group D														
Vaporizer Approvals	FM (U.S. and Canada), designed per ASME															
Liquid Inlet Connection	¾" FNPT threaded connection															
Vapor Outlet Connection	1" FNPT threaded connection															
¹ Vaporization Capacity	TX25		TX50		TX100		TX160		TX240		TX320					
Kg/h	25		50		100		160		240		320					
US Gal/h	12.5		25		50		80		120		160					
MMBTU/h	1.1		2.2		4.5		7.2		10.9		14.5					
Design Pressure	←				250 PSIG 17.2 Barg				→							
Relief Valve Set Point	←				250 PSIG 17.2 Barg				→							
Hydrostatic Test Pressure	←				375 PSIG 25.9 Barg				→							
Shipping Weight	130 lbs 59 kg		130 lbs 59 kg		135 lbs 61 kg		145 lbs 66 kg		270 lbs 123 kg		280 lbs 127 kg					
Shipping Dimensions																
Height	54"		54"		54"		54"		66"		66"					
	1372 mm		1372 mm		1372 mm		1372 mm		1676 mm		1676 mm					
Width	19"		19"		19"		19"		26"		26"					
	483 mm		483 mm		483 mm		483 mm		660 mm		660 mm					
Length	19"		19"		19"		19"		31"		31"					
	483 mm		483 mm		483 mm		483 mm		787 mm		787 mm					



**Optional
Economy
Operation
Valve:**

Activates vaporizer based on tank pressure. Requires no electricity; easily field installed on TX25 – TX320.

¹ Vaporization capacity shown is nominal. Actual is impacted by LPG composition and pressure. If installing multiple vaporizers, contact ASDI for additional details.

Algas-SDI developed its first vaporizer in 1932. Over eighty years later, we still lead the market in quality, innovation and **commitment to our purpose**. Our products allow businesses located off the gas grid or under curtailment, to operate. We eliminate downtime ensuring **workers can work and goods and services can flow to market**.



151 S. Michigan Seattle, WA USA 98108
+1 206-789-5410 | Fax: +1 206-789-5414
sales@algas-sdi.com

algas-sdi.com

TXFM-07/2021

