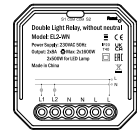


# ENGO RELAY

Double Light Relay, 230V, without neutral



## EL2-WN

### Quick Guide

Ver. 1.0

Release date: VI 2025

Soft: v1.0.4



# ENGO

CONTROLS

Producer:  
Engo Controls sp.z.o.o.sp.k.  
Rolna 4 St.  
43-262 Kobielice  
Poland

## Introduction

The ZigBee dual relay can wirelessly control lighting and selected devices in a smart home. It fits in an installation box, which allows it to be mounted under a light switch or under a power outlet. The EL2-WN version does not require a neutral wire connection, making it suitable for older lighting installations. It is also possible to mount it on a DIN rail using the included bracket. A ZigBee Internet gateway is required for its proper operation.

This product must be used with EGA-TEZB ZigBee 3.0 gateway (purchased separately), because programming of the module is done via the ENGO Smart application.

## Product Compliance

This product complies with the following EU Directives: 2011/65/EU, 2014/30/EU.

## Safety information

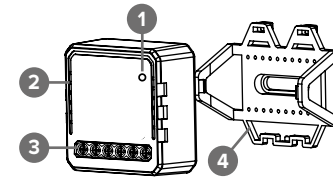
Use in accordance with national and EU regulations. Use the device only as intended, keeping it in a dry condition. The product is for indoor use only. Installation must be carried out by a qualified person in accordance with national and EU regulations.

## Installation:

Installation must be performed by a qualified person with appropriate electrical qualifications, in accordance with the standards and regulations in force in a given country and in the EU. The manufacturer is not responsible for non-compliance with the instructions.

For the entire installation, there may be additional protection requirements, which the installer is responsible for.

## Device description



### 1. Reset button

Pressing for 5 seconds activates pairing mode and factory reset at the same time.

### 2. LED diode

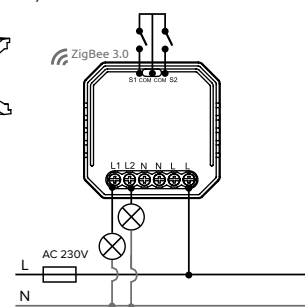
Flashing - active pairing mode with the application

### 3. Connection pins

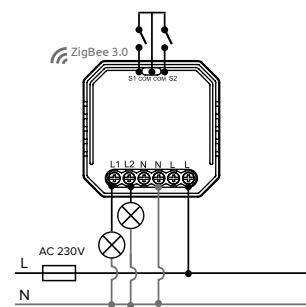
### 4. DIN rail mount

## Connection description

### a) Without neutral



### b) With neutral



## Legend

L, N Power supply 230V

Fuse

L1, L2 Output contact 230V AC

COM-S1, COM-S2 Volt-free contact

Light source

External switch contact

## Installation of the relay in the app

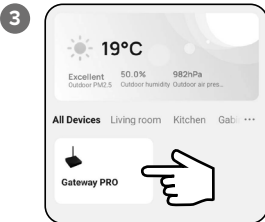
- 1 Make sure your router is within range of your smartphone. Make sure you are connected to the Internet. This will reduce the pairing time of the device.



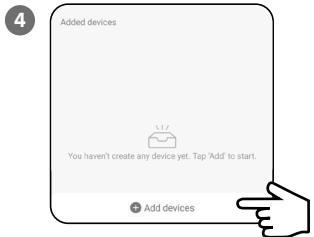
Download the ENGO Smart app from Google Play or Apple App Store and install it on your smartphone.



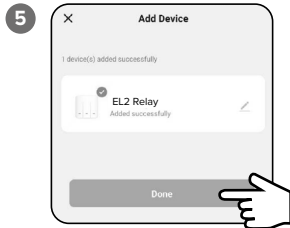
Make sure that the ZigBee gateway has been added to the app. Hold the button on the relay for about 5 seconds or perform a sequence of 5 quick switches on the switch. The LED will start flashing. The device will enter pairing mode.



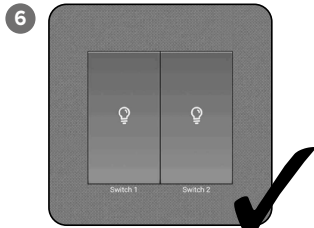
Enter the gateway interface.



Click „Add devices”. Follow the instructions in the app.



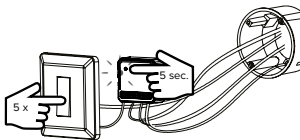
When the device appears in the application, click "Done".



The relay has been installed and displays the main interface.

## Factory reset

To reset the device's memory, press and hold the Reset button for about 5 seconds or perform a sequence of 5 quick switch toggles. The LED will start flashing. The relay will be removed from the ZigBee network and the gateway's memory and will enter pairing mode. You can add it again (see: Installation of the relay in the app). If the Relay is not added to the new network, it will automatically reconnect to the old ZigBee network.



## Technical specification

Power supply	100-240V AC
Max. load	2x1600W / 2x(10-500W)-LED
Communication	ZigBee 3.0, 2.4GHz
Steering output	L1, L2 - 230V AC
Steering input	COM-S1, COM-S2 Volt-free
Protection class	IP20
Dimensions [mm]	39x39x18